



MTKN. Mordaza roscada para viga

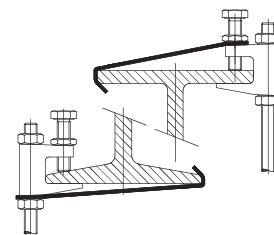
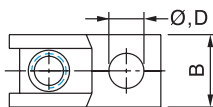
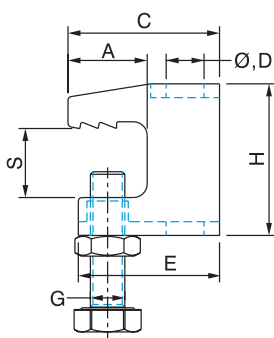
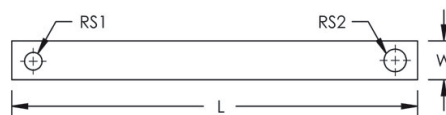


> CERTIFICADOS



> CARACTERÍSTICAS DE PRODUCTO

Material MTKN	Acero 1.0332 DIN EN10111
Acabado MTKN	Electrozincado 8-12 µm
Material MTKC	Acero
Acabado MTKC	Pregalvanizado



Referencia	S	D	G	A	B	C	E	H	LxW	RS	Carga puntual	Normativa
	mm	M	M	mm	mm	mm	mm	mm	mm	mm	N	
MTKN08	18	M08	M08	21	19	38	35	37	-	-	1200	Vds
MTKN10	20	M10	M10	23	21	44	41	44	-	-	2500	Vds / FM
MTKN12	26	M12	M10	35	23	58	48	56	-	-	3500	Vds / FM
MTKC812	-	-	-	-	-	-	-	-	350 x 25	10	-	-